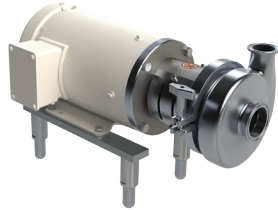


Wineries and Breweries

BC/BP Series Centrifugal Pumps



Applications:

- unloading
- transfer
- CIP supply

Materials:

- 316L
- buna, EPDM, silicone and FKM elastomers

Features:

- impeller retainer or threaded impeller nut options
- stamped volute
- wet ends, motor pump units and carts
- 3A & CIPable

Sizes:

- inlet 1½" to 6"
- outlet 1½" to 4"

JRZL Series Positive Displacement Pumps



Applications:

- unloading
- transfer
- metering
- CIP supply

Material:

- 316L

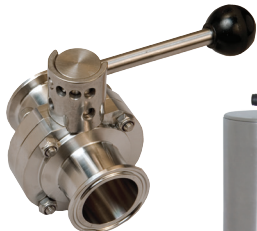
Features:

- front loading seals
- various rotor options
- 1"- 4" models stainless steel gear box standard
- 3A & EHEDG
- 100% CIPable

Sizes:

- 1" to 10"

B5101 and B5115 Series Butterfly Valves



B5101



B5101 Actuated



B5115

Applications:

- isolation
- control

Sizes:

- ½" to 8"

Materials:

- B5101: 316L
- B5115: 304

Features:

- B5101
- variable actuator and control packages
 - multiple handle options
 - 3 seat materials available

B5115

- silicone seat material only
- manual handle only, cannot be actuated

BV2C Series Ball Valves



Applications:

- isolation
- diversion
- control

Material:

- CF8M

Features:

- 5 encapsulated seat materials available
- ISO 5211 mounting pad standard
- optional 2 way V-port seat
- various actuation and control packages

Sizes:

- ½" to 4"

Wineries and Breweries

TV Series Tank Vent Valves



PVC

Application:

- secondary tank protection during filling or draining of tanks



Stainless Steel

Features:

- PVC
- PVC with stainless dome
 - 2" and 3" clamp connections on same valve
 - 304 stainless dome

Stainless Steel

- Stainless steel valve
- Stainless steel screen
- 2", 3" and 4"

Topping Gun, Gauges, Sample Valves, Sight Glasses and Spray Balls



Topping Gun



Pressure Gauges



Sample Valves

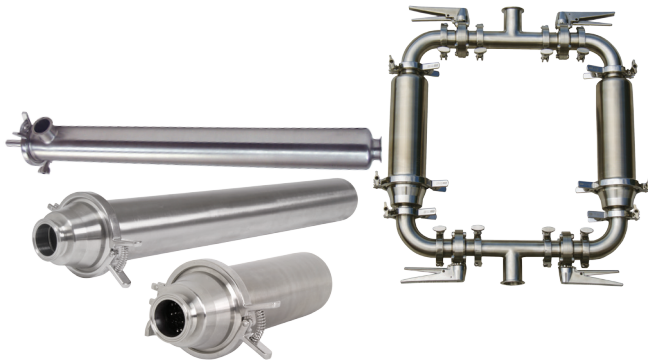


Sight Glasses



Spray Balls

Strainers



Applications:

- filtering
- removing hops from wort or beer

Material:

- 316L

Features:

- inline
- side entry and side outlet
- dual strainer assemblies using ball or butterfly valves

Sizes:

- 1" to 3"

JRZW120 Wine Pump



Applications:

- must and lees
- transfer
- bottling

Size:

- 2" clamp

Materials:

- 316L
- EPDM rubber heli-lobe

Features:

- maximum flow: **66 GPM**
- maximum working pressure: **87 PSI**
- mounted on a cart with flat free wheels or casters
- nord adjustable speed gearmotor

Dixon®, founded in 1916, is a premier manufacturer and supplier of hose couplings, valves, dry-disconnects, swivels, and other fluid transfer and control products. The company's global reach includes a wide range of products for numerous industries including petroleum exploration, refining, transportation, chemical processing, food & beverage, steel, fire protection, construction, mining and manufacturing. Dixon's strategic objective is to create solutions that make products safer, leak-free, longer lasting, and always available.

dixonvalve.com • *Customer Service:* **800.789.1718**

Dixon Sanitary

N25 W23040 Paul Road, Pewaukee, WI 53072

Fax: 800.789.4046

sanitarysales@dixonvalve.com

For complete catalog and literature downloads go to dixonvalve.com

